

Appendix A. Raw data used for species distribution modeling and projection (Figure 1 in the manuscript) and associated Maxent response curves for both species investigated.

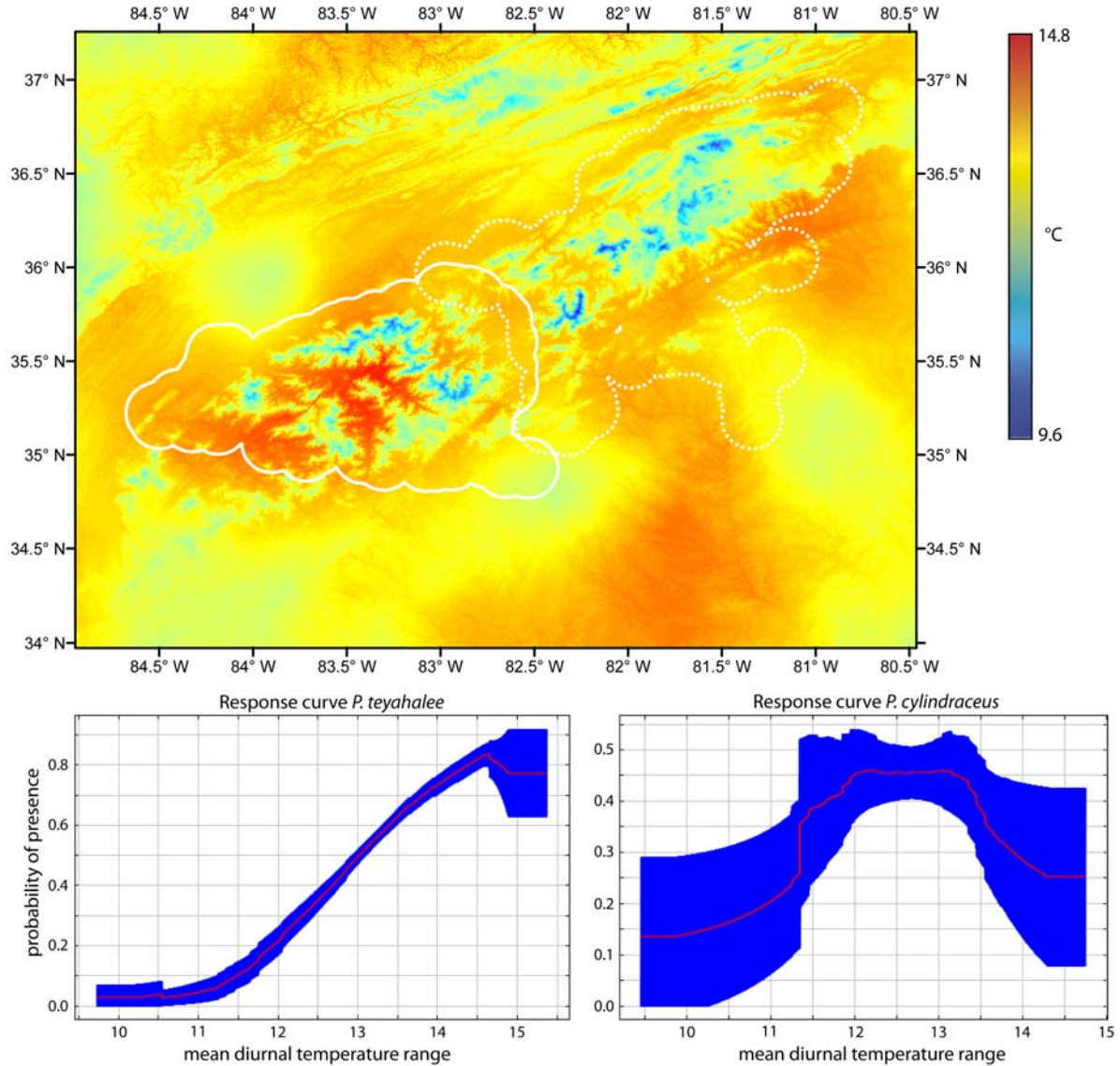


Fig. A1 Distribution of the variable range of the ‘mean diurnal temperature range’ in the projection area (top), as well as the associated Maxent response curves (average \pm sd based on 100 replications) for *Plethodon teyahalee* (lower left) and *P. cylindraceus* (lower right) simulating responses based on interactions of all variables. The trainings region for the SDM of *P. teyahalee* is contoured by the solid buffer line; that for *P. cylindraceus* as dashed buffer line.

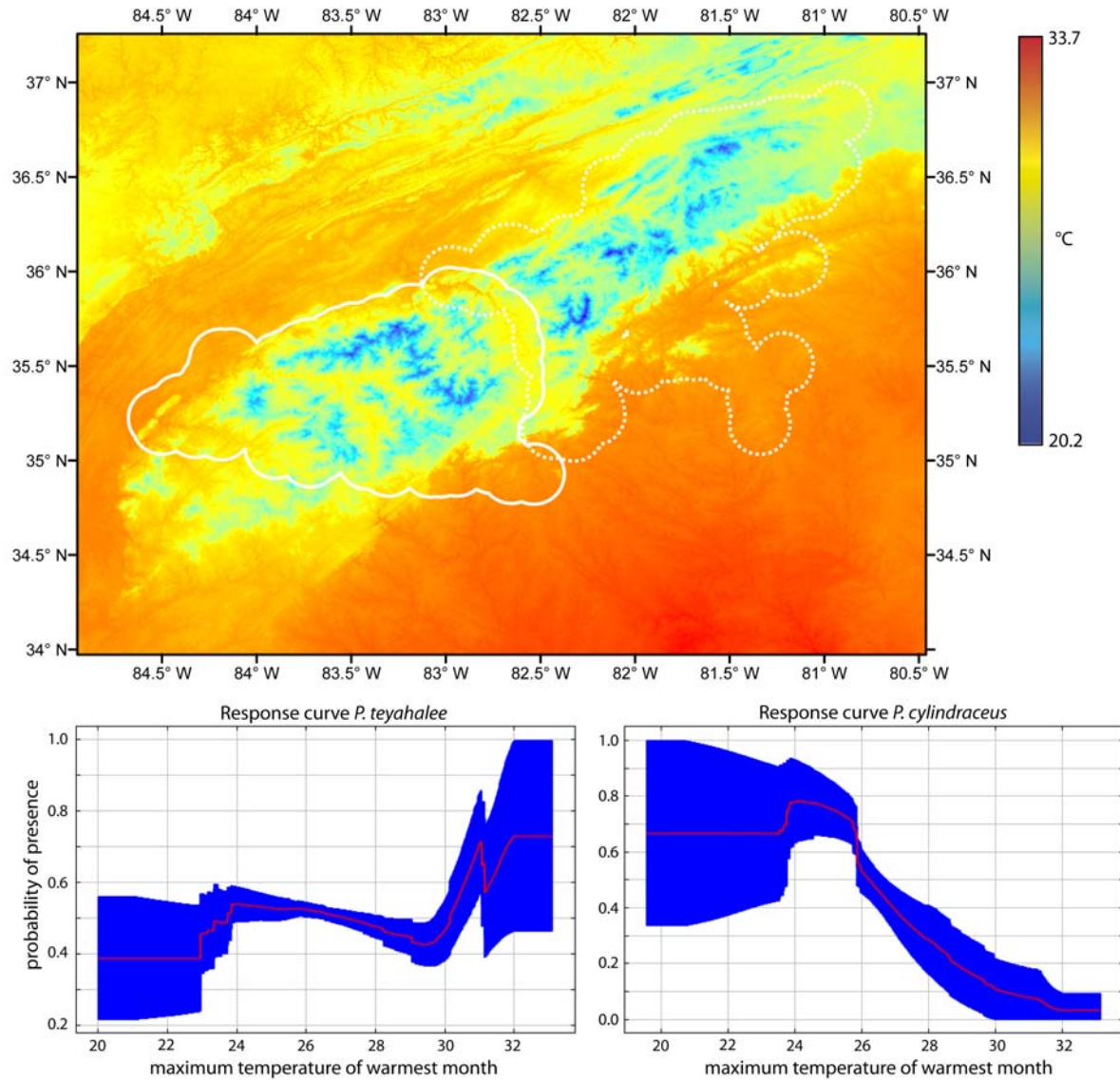


Fig. A2 Distribution of the variable range of the ‘*maximum temperature of the warmest month*’ in the projection area (top), as well as the associated Maxent response curves (average \pm sd based on 100 replications) for *Plethodon teyahalee* (lower left) and *P. cylindraceus* (lower right) simulating responses based on interactions of all variables. The trainings region for the SDM of *P. teyahalee* is contoured by the solid buffer line; that for *P. cylindraceus* as dashed buffer line.

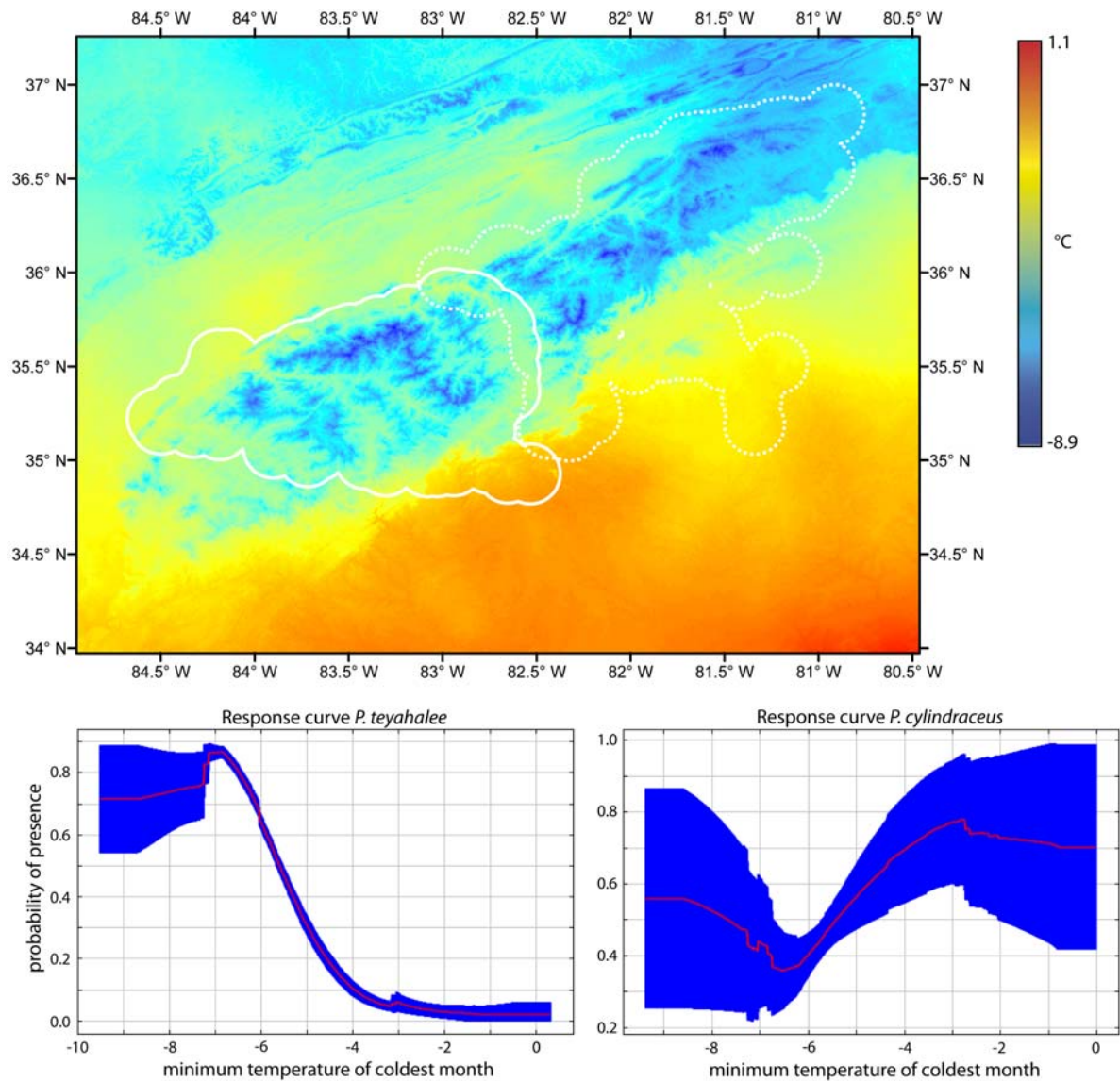


Fig. A3 Distribution of the variable range of the ‘*minimum temperature of the coldest month*’ in the projection area (top), as well as the associated Maxent response curves (average \pm sd based on 100 replications) for *Plethodon teyahalee* (lower left) and *P. cylindraceus* (lower right) simulating responses based on interactions of all variables. The trainings region for the SDM of *P. teyahalee* is contoured by the solid buffer line; that for *P. cylindraceus* as dashed buffer line.

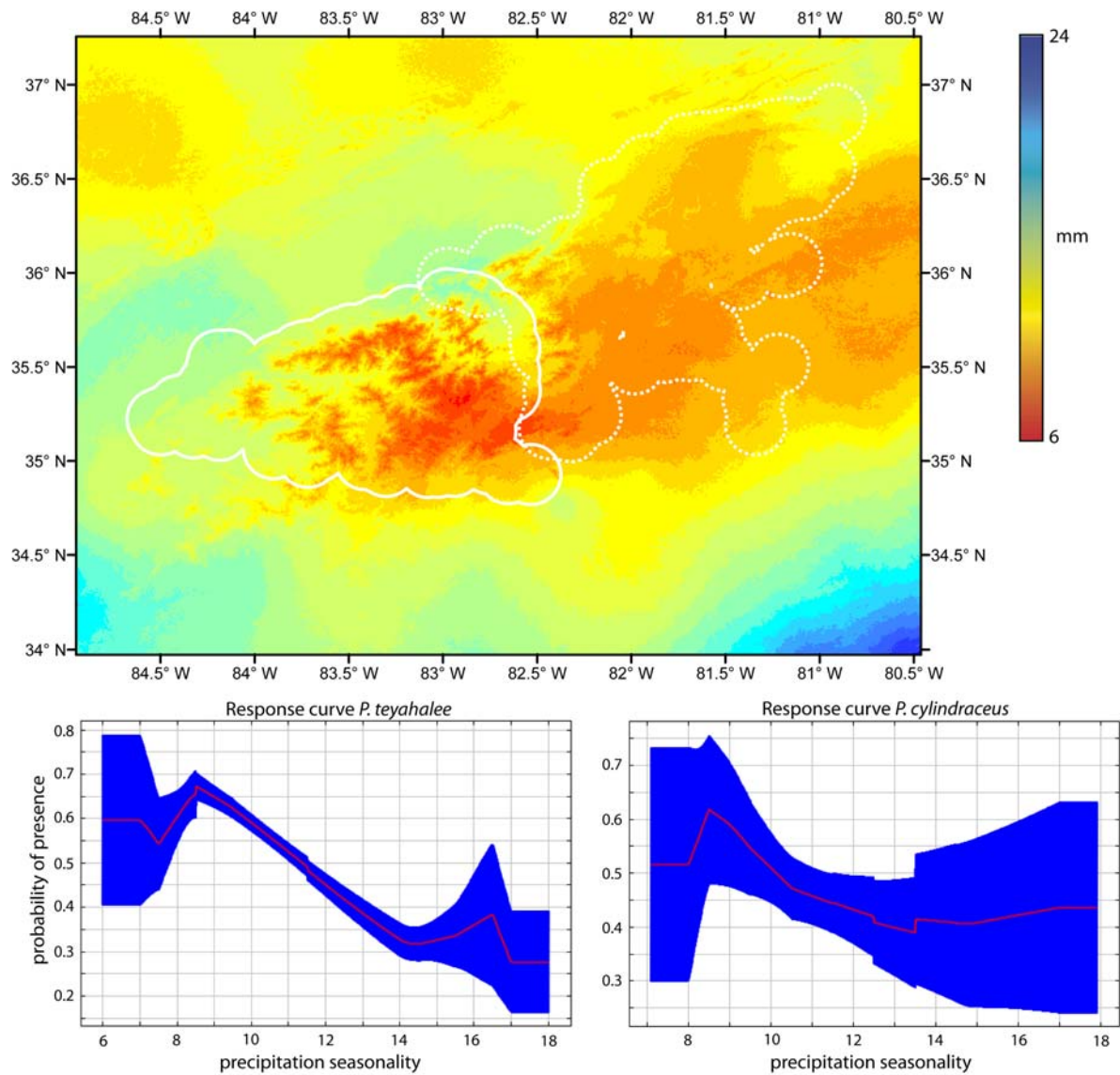


Fig. A4 Distribution of the variable range of the ‘*precipitation seasonality*’ in the projection area (top), as well as the associated Maxent response curves (average \pm sd based on 100 replications) for *Plethodon teyahalee* (lower left) and *P. cylindraceus* (lower right) simulating responses based on interactions of all variables. The trainings region for the SDM of *P. teyahalee* is contoured by the solid buffer line; that for *P. cylindraceus* as dashed buffer line.

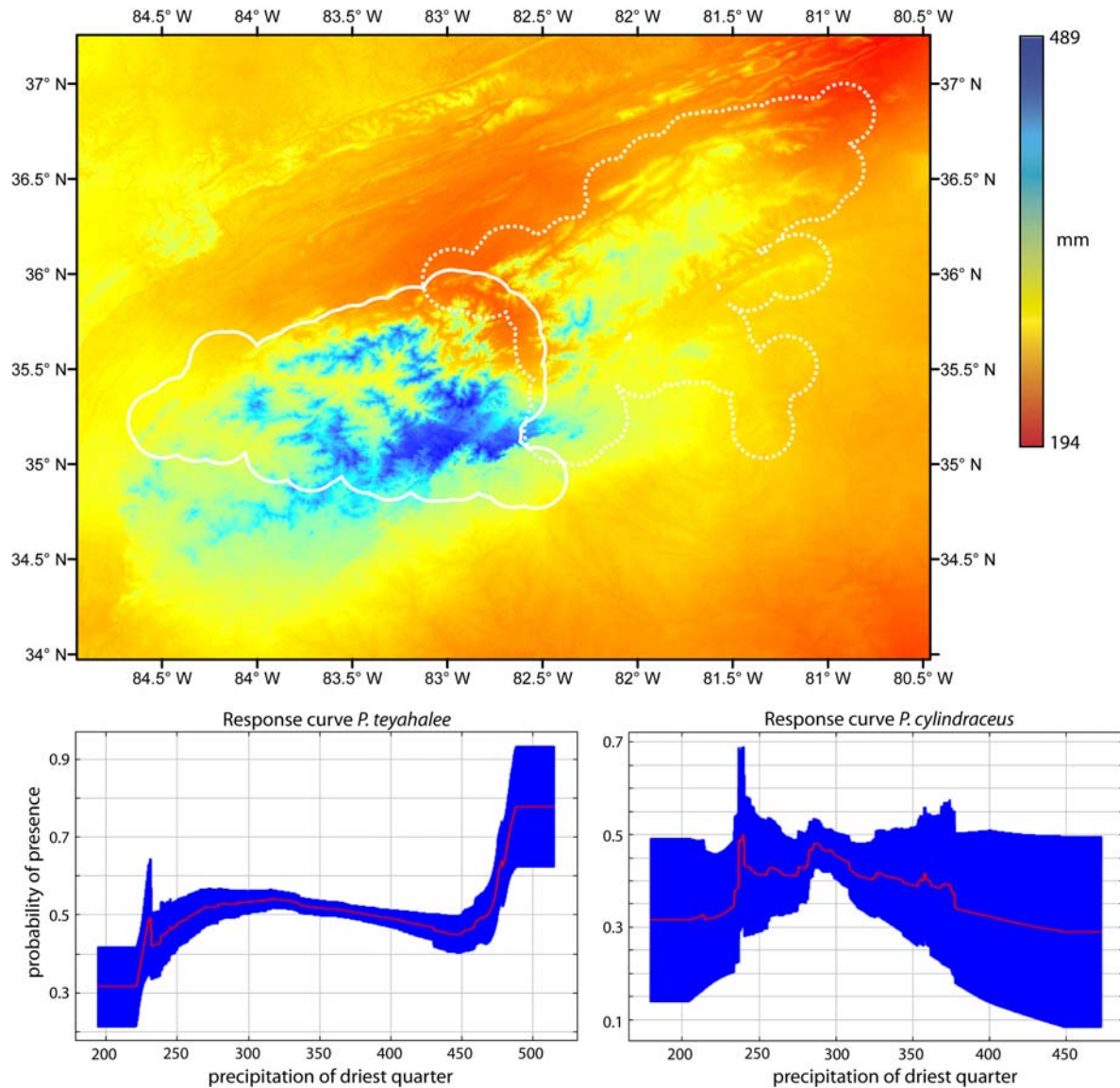


Fig. A5 Distribution of the variable range of the ‘precipitation of the driest quarter’ in the projection area (top), as well as the associated Maxent response curves (average \pm sd based on 100 replications) for *Plethodon teyahalee* (lower left) and *P. cylindraceus* (lower right) simulating responses based on interactions of all variables. The trainings region for the SDM of *P. teyahalee* is contoured by the solid buffer line; that for *P. cylindraceus* as dashed buffer line.